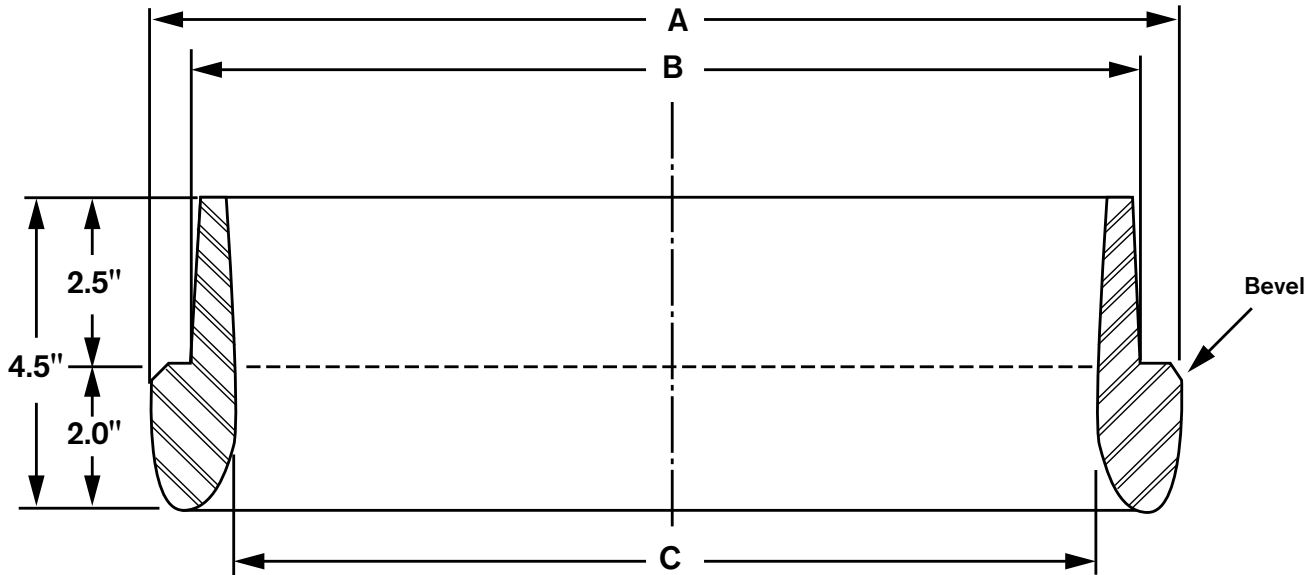


INSIDE CUTTING SHOE

O-14001



MATERIAL: CAST STEEL
 ASTM A148 90/60 Heat Treated
 Normal foundry tolerances apply

PIPE OD	A	B	C	wt.
10-3/4"	10-3/4"	9-3/4"	8-5/8"	26#
12-3/4"	12-3/4"	11-3/4"	10-5/8"	27#
16"	16"	14-3/8"	13-3/8"	43#
20"	20"	18-3/16"	17-3/8"	53#
24"	24"	22-1/4"	21-5/8"	68#

Attachment Procedure

1. Hold cutting shoe in close contact with the end of pile.
2. Place a 5/16" partial penetration single-bevel groove weld along the entire circumference of the pile/shoe interface utilizing an E70XX welding rod or equivalent filler material.



**ASSOCIATED PILE
& FITTING**

45 Samworth Road, Clifton, NJ 07014
 Tel: 973-773-8400
 Fax: 973-773-8442
 email: apf@associatedpile.com
www.associatedpile.com
 Call Toll Free: 800-526-9047